

Chart - History Singles



All chart-entries in the Top 100
Germany / United Kindom / U S A

Peak:

Peak:

Peak:

Kenny Rogers & The First Edition



Kenny Rogers and The First Edition, sometimes billed as The First Edition, was an eclectic pop band whose styles ranged from rock and roll to R&B, folk, and country. Its core members were Kenny Rogers (lead vocals and bass guitar), Mickey Jones (drums and percussion) and Terry Williams (guitar and vocals). The band formed in 1967, with folk musician Mike Settle (guitar and backing vocals) and the operatically-trained Thelma Camacho (lead vocals) completing the lineup.

Peak	No. of Titles			Positions		
	Tot.	T10	#1	Tot.	T10	#1
	--	--	--	--	--	--
	2	2	--	37	14	--
	5	10	--	96	7	--
	2	10	3	133	21	--

Singles

compiled by
Volker Doerken

Germany

UK

USA

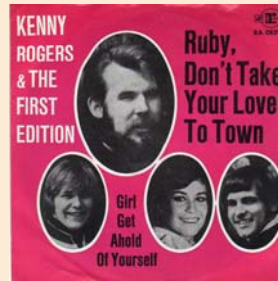
#	Single	Germany				UK				USA			
		Date	Peak	WoC	T10	Date	Peak	WoC	T10	Date	Peak	WoC	T10
1	Just Dropped In (To See What Condition My Condition Was In) <i>The First Edition</i>	02/1968	5							02/1968	5	10	4
2	But You Know I Love You <i>The First Edition</i>									01/1969	19		11
3	Ruby, Don't Take Your Love To Town					10/1969	2	23	12	06/1969	6	13	3
4	Ruben James									09/1969	26		12
5	Something's Burning					02/1970	8	14	2	02/1970	11		16
6	Tell It All Brother									07/1970	17		11
7	Heed The Call									10/1970	33		10
8	Someone Who Cares									03/1971	51		7
9	Take My Hand									06/1971	91		2
10	School Teacher									04/1972	91		4



1 1968 5



2 1969 19



3 1969 2 6



4 1969 26



5 1970 8 11



6 1970 17



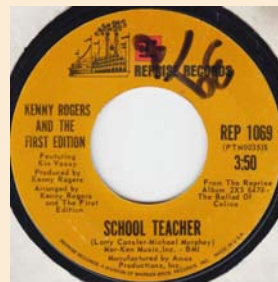
7 1970 33



8 1971 51



9 1971 91



10 1972 91

Kenny Rogers & The First Edition

Volker Doerken, Wuppertal, Germany // Contact: vdw56@gmx.net // lots of videos on Facebook: hits-100